

# UK REACH Roles and Obligations

Find Out Your Role and Your Obligations in the Cosmetic Supply Chain

## SUPPLIERS

**Importer** of Cosmetic Ingredients or Products

**Manufacturer** of Cosmetic Ingredients

### REGISTRATION

You have obligations to register chemicals under UK REACH.



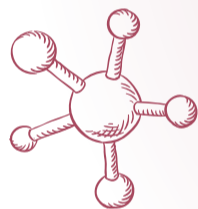
### RESTRICTION

You must follow specific restriction requirements for certain chemicals.



### AUTHORISATION

You must hold an authorisation to manufacture and use certain substances of very high concern.



### COMMUNICATION

You must communicate risk management and safe use of chemicals to downstream users.



## DOWNSTREAM USERS

**Manufacturer** of Cosmetic Products and/or **Brand Owner**

**Distributor** of Cosmetic Ingredients or Products

### RESTRICTION

You must follow specific restriction requirements for certain chemicals.

### AUTHORISATION

You must hold an authorisation to use certain substances of very high concern.

### COMMUNICATION

You must check with your supplier if the chemical is registered under UK REACH and inform them of the use as a cosmetic product.

YOU MUST ALSO IDENTIFY AND APPLY APPROPRIATE MEASURES IN THE SAFETY DATA SHEET AND EXPOSURE SCENARIOS

## What Are the Obligations Under UK REACH?

**Registration** is the process of compiling and submitting a dossier to the regulator containing the properties and uses of a substance, the hazards and potential risks presented by the substance.

**Restrictions** are normally used to limit or ban the manufacture, placing on the market (including imports) or use of a substance. Manufacturing, using or importing a restricted substance must comply with the restriction requirements.

**Authorisation** is a process by which some Substances of Very High Concern (SVHCs) require a specific approval to be manufactured and used.

**Communication** between downstream users and suppliers at all stages in the REACH process helps to ensure that relevant information is shared throughout the supply chain.

WANT TO KNOW MORE?  
GO TO [WWW.CTPA.ORG.UK](http://WWW.CTPA.ORG.UK)