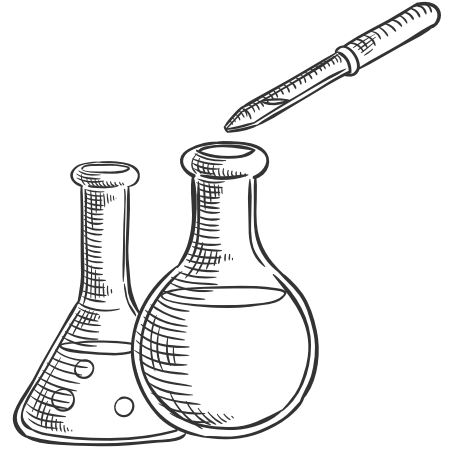


REACH for the Cosmetics Industry

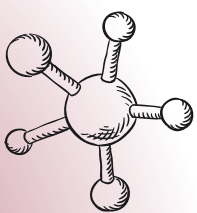
Find Out if REACH Applies to Your Company

The REACH framework applies to individual chemical substances, but places responsibilities on the companies that manufacture or import them.



Does it Apply to All Chemical Substances?

REACH applies to all chemical substances, including:



Substances on their own, for example, cosmetic ingredients or some raw materials.

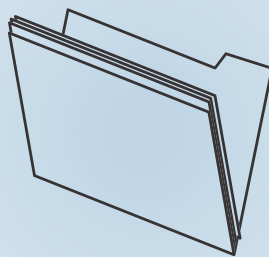
Substances in mixtures, like the ingredients within a finished cosmetic product.



Even natural ingredients have chemical substances, although some of these might be exempt.

When Does A Company Have Responsibilities?

When a company **manufactures** a chemical substance over 1 tonne/year



When a company **imports** a chemical substance over 1 tonne/year

Remember: consider all sources of the chemical substance

Still Unsure if you Have Responsibilities?



- 1 Check if you meet the conditions above
- 2 Check with your supply chain
- 3 Seek expert advice

WANT TO KNOW MORE?
GO TO WWW.CTPA.ORG.UK